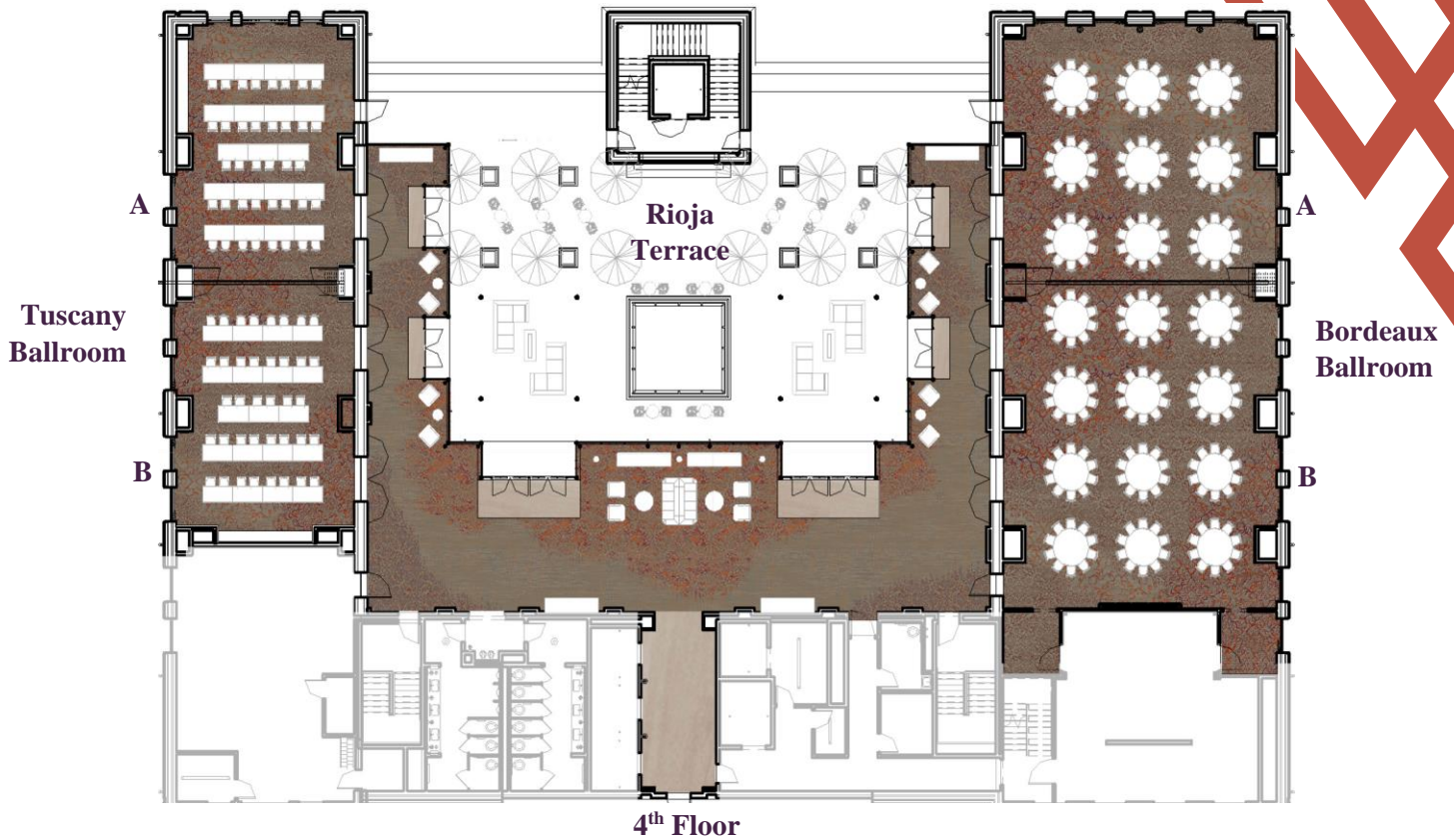


# Max Capacities & Floorplan



Room Name	Sq. Ft	Dimensions	Reception	Banquet	Theatre	Schoolroom	U-Shape	Conference
Bordeaux Ballroom	4,232	92'L x 46'W x 21'H	410	360	352	288	–	–
Bordeaux A	1,886	41'L x 46'W x 21'H	180	160	132	135	42	36
Bordeaux B	2,346	51'L x 46'W x 21'H	230	200	175	162	54	42
Tuscany Ballroom	2,130	71'L x 30'W x 18'H	210	190	182	144	–	–
Tuscany A	1,200	40'L x 30'W x 18'H	100	80	98	75	36	36
Tuscany B	930	31'L x 30'W x 18'H	90	80	85	78	36	36
Rioja Terrace	4,698	58'L x 81'W	125	–	–	–	–	–
Third Rail at Harvest Hall	2,635	85'L x 31'W x 15'H	150	80	–	–	–	–
Magnum	420	14'L x 30'W x 13'H	20	–	–	–	–	–
Meritage	312	13'L x 24'W x 12'H	24	20	–	–	–	16
Cuvée	312	13'L x 24'W x 12'H	24	20	–	–	–	16
Riedel	312	13'L x 24'W x 12'H	24	20	–	–	–	16

## EVERY MOMENT MATTERS

We take care of every single detail, so you don't have to.

817.796.9696 | [info@hotelvin.com](mailto:info@hotelvin.com) | [HotelVin.com](http://HotelVin.com) | 215 E. Dallas Road, Grapevine, TX 76051

MARRIOTT  
**BONVOY**



HOTEL VIN  
AUTOGRAPH COLLECTION  
HOTELS